



AGI DRIVE V8 - HMI 10 WAY DIPPER SWITCH SETTING

1 ON, 2 OFF = Cruise Control

1 OFF, 2 ON = Remote Throttle

1 OFF, 2 OFF = Can Bus for Cummins engines (CAN Jumper - Measure the CAN Line see below)

1 ON, 2 ON = Can Bus for UD Trucks (CAN Jumper ON)

1 ON, 2 ON, 7 ON = Can Bus for SINO Trucks (CAN Jumper ON)

4 ON = Use Park Brake for Throttle Hardwired Interlock instead of neutral switch

6 OFF = Hydraulic Fan Turns ON with Mix or Discharge

6 ON = Fan Turns ON with Temperature sensor

8 ON = Turns On Weight Scales

9 ON = Physical Neutral Interlock

10 ON = Fan Turns ON with Ignition

Please Note: Do not turn ON any other dipper switch numbers if not listed above.

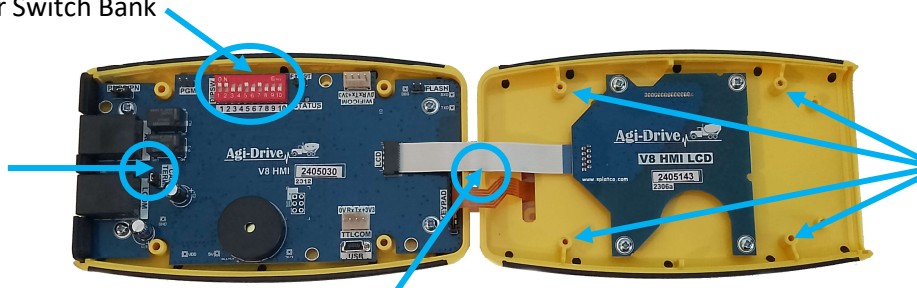
Measuring the CAN Line

If CANbus Resistance is 120 Ohms put Can Termination Jumper ON,

if Can Resistance is 60 Ohms then, Jumper OFF

10 Way Dipper Switch Bank

CANbus
Resistance
Jumper



Remove the
4 rear screws

Do not crush or damage
the 2 PCB ribbon cables

AGI-Drive Pty Ltd.

10/21 Kangaroo Road, Somersby NSW 2250

NSW (Somersby) Mob: 0407 747 48 - QLD (Brisbane) Mob: 0494 300 290

enquiries@agi-drive.com.au -